

Year 11 DVC

Influential Designer





What makes a designer influential?

Designers become influential when their designs are recognised as 'break through' or innovative.

Usually, an influential designer follows the current design trend and can often lead the trend with their ideas and designs.

It is important to note these designers as their creations shape the way we design and create to this day.

Year 11 DVC

**Influential
Designer**



Brief:

Select a designer that you find interesting and research their background, style, influences and work to gain a greater understanding of their journey and features as an artist.

Use this information to design a Bird Home for the Horowhenua Lake conservation programme.

Year 11 DVC

Influential Designer

Frank Lloyd Wright

Year 11 DVC
**Influential
Designer**



Mies van der Rohe

Year 11 DVC
**Influential
Designer**



Louis Kahn

Year 11 DVC
**Influential
Designer**



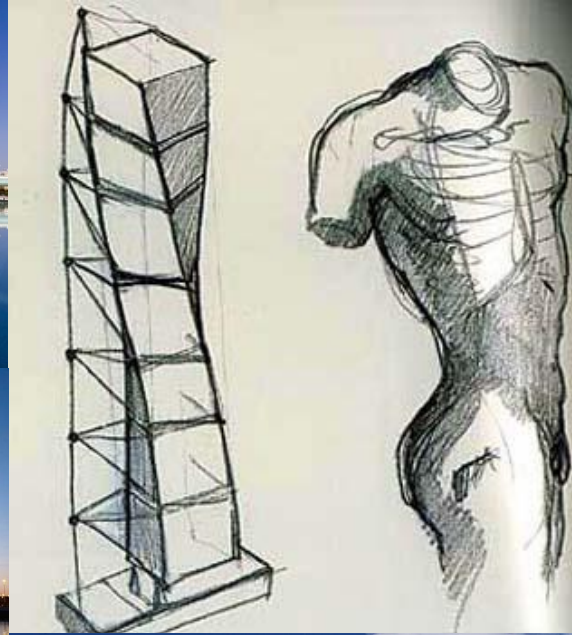
Frank Gehry



Year 11 DVC
**Influential
Designer**

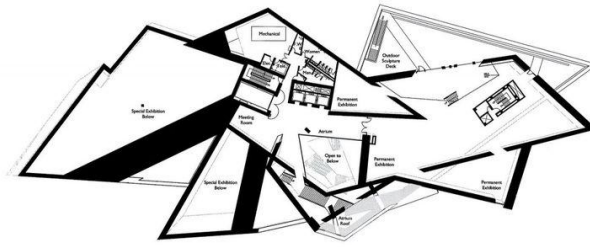
Santiago Calatrava

Year 11 DVC
**Influential
Designer**



Daniel Libeskind

Year 11 DVC
**Influential
Designer**



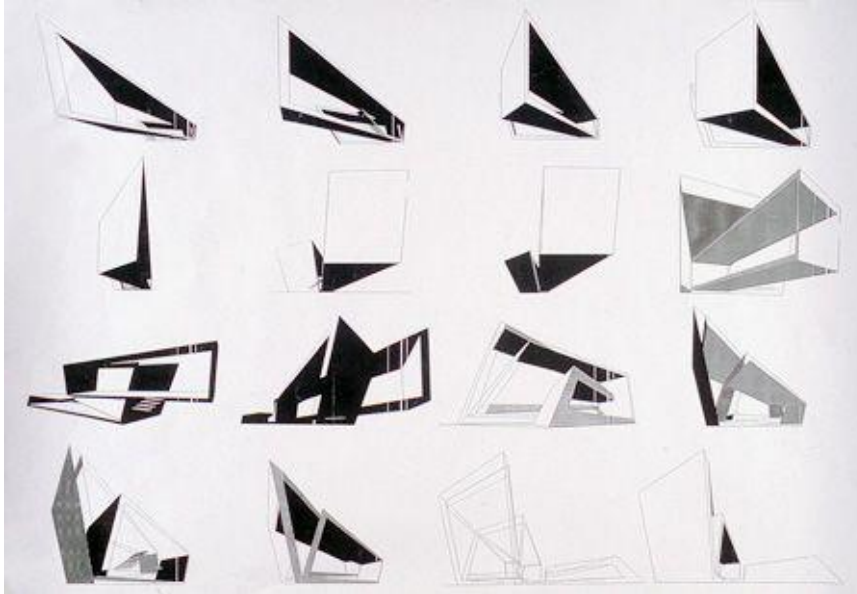
Tadao
Ando

Year 11 DVC
**Influential
Designer**



Zaha
Hadid

Year 11 DVC
**Influential
Designer**



Norman Foster

Year 11 DVC
**Influential
Designer**





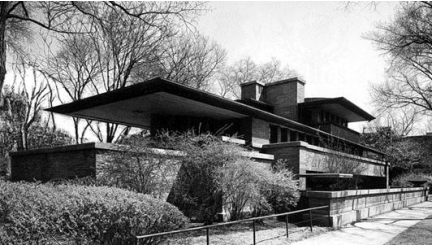
Seen a designer that appeals?

Now it is time to discover more about that designer. Create a google slide presentation (using the presentation techniques you learnt last year while you make it) with the below information on the slides:

Find out:

- **Who they are (about them)**
- **Their designs**
- **Their practice (traits and characteristics)**

Use aesthetic and functional vocabulary to identify, describe, analyse and explain the aesthetic and/or functional features of typical products of the designers work (this could include a range of their work or an individual piece).



Year 11 DVC

**Influential
Designer**

DUE:

18 March, 2016

Year 11 DVC

**Influential
Designer**