

# **TEENAGE SPACE**


UNIT 4 - LANDSCAPING

## **Landscaping - why is it important?**

- **Nature changes the 'footprint' of the building on the land (merges with the land)**
- **Landscape effects the feeling and atmosphere of a structure as it is what you see out the windows**
- **Landscape can accentuate features of a building, lead you to certain parts and compliment design aspects.**

<https://www.youtube.com/watch?v=ONIpzoDOr6Y>

# Steps to communicate landscape designs:

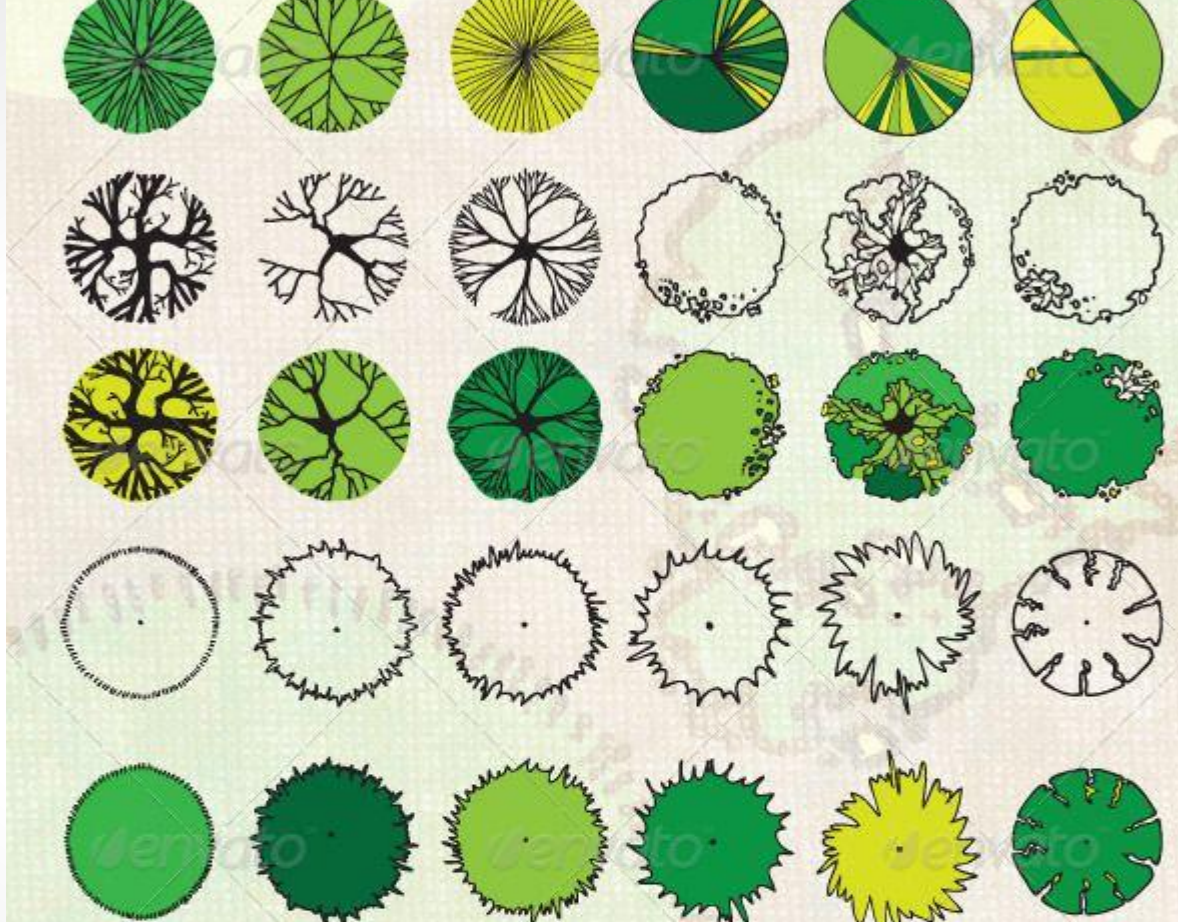


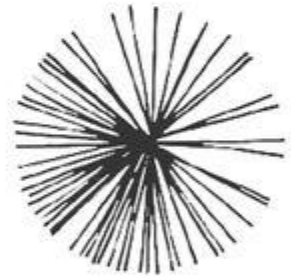
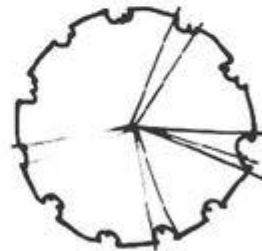
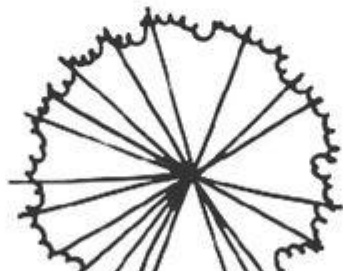
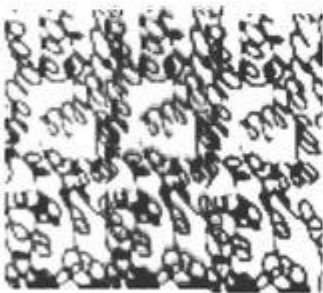
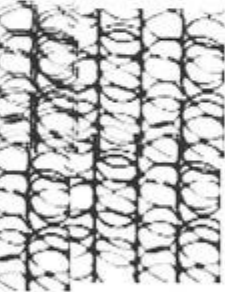
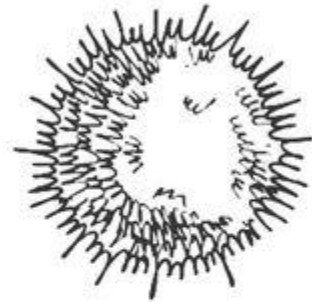
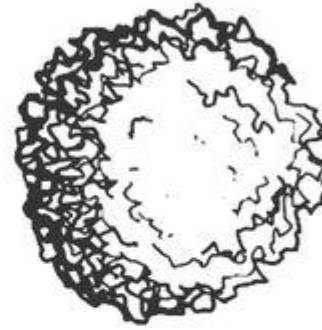
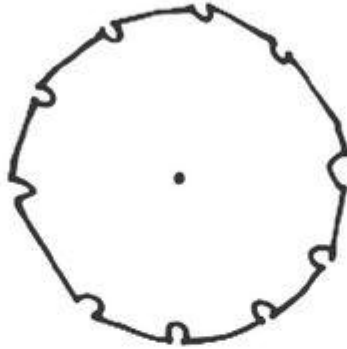
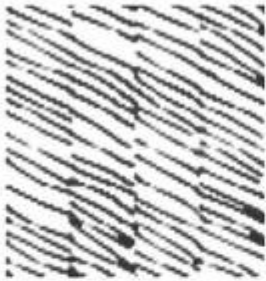
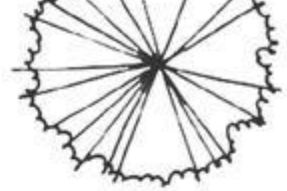
**1. Research plant /  
paver / decking etc  
types that best suit  
your brief + specs**



## 2. Choose suitable plants, and generate symbols for them

<https://www.pinterest.com/pin/369647081891783545/>





### 3. Start the Design process!

<https://www.pinterest.com/pin/469922542344446301/>





<https://www.pinterest.com/pin/40391727883227604/>





<https://www.pinterest.com/pin/263319909434906940/>



<https://www.pinterest.com/pin/427067977139110553/>





<https://www.pinterest.com/pin/427067977139110553/>

